



# Flight Plan & Site Survey

Created using **RPAS Wilco®**

Operation Name:	SSRCMFC - Greenfield
Pilot Name:	[REDACTED]
Pilot Certificate:	[REDACTED]
Flight Start:	June 22, 2023 2:37 PM
Flight End:	June 22, 2023 4:37 PM
Flight Area (Latitude):	44° 13' 55.80" N ( 44.232 )
Flight Area (Longitude):	64° 51' 8.80" W ( -64.852 )
Altitude - Radius:	Alt: 700 ft - Rad: 926.0 m ( 0.5 nm)
Airspace:	UNCONTROLLED
FIR - Contact:	CZQM - 506-867-7173

Please ensure you received all required authorizations prior to flight.

## Disclaimer

This Site Survey was created using RPAS Wilco by AIM Robotics. The flight plan contained is intended only for RPAS flights on the date/time and location specified. The user accepts all responsibility for the accuracy and completeness of the information contained.

For the complete Terms & Conditions, see

<https://rpaswilco.com/#/tnc>

## Included



- Site Survey
- Obstacles (if available)
- Nearby Aerodromes
- Canadian Aviation Regulations
- GFA
- Aerodrome Supplements
  - METAR & TAF (if available)
  - NOTAMS
  - CFS



## Flight Map

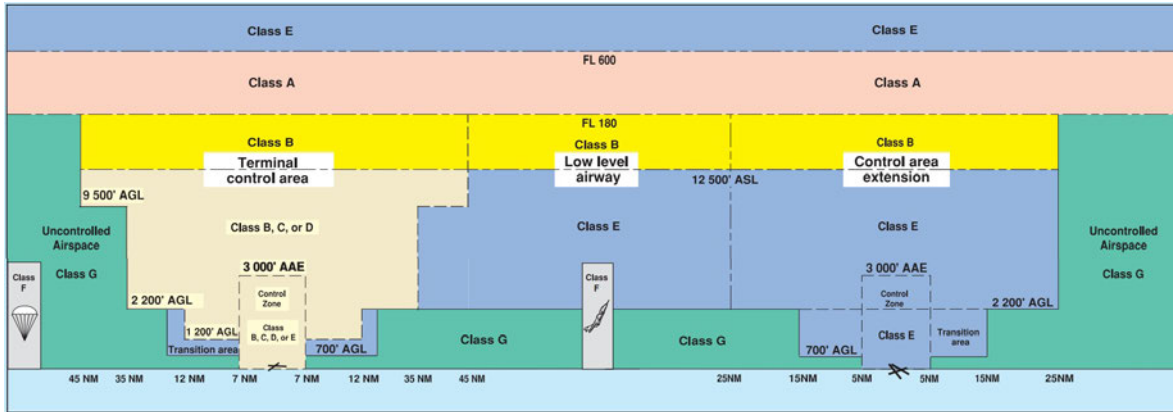


## MAP Details

	Latitude	Longitude
 <b>MODEL</b>	44° 13' 55.80" N ( 44.232 )	64° 51' 8.80" W ( -64.852 )
 <b>Pilot</b>	44° 13' 59.40" N ( 44.2332 )	64° 51' 12.40" W ( -64.8534 )



## Airspace Classification



## Overlying Airspaces

Class	Name	Floor	Ceiling
E	CHARLO, NB CAE	2200AGL	12500MSL
B	Yarmouth, NS CAE	12500MSL	18000MSL
B	CHARLO, NB CAE	12500MSL	18000MSL

## Nearest Aerodromes & Distance from Operation

SOUTH SHORE REGIONAL (CYAU AERODROME Reg)	Lat: 44.23	Long: 64.856	0.372 KM	0.2 NM
LIVERPOOL (QUEENS GEN HOSPITAL) (CLQ2 HELIPORT Cert)	Lat: 44.039	Long: 64.705	24.491 KM	13.22 NM
DAYSRING AIRPARK (CDY6 AERODROME Reg)	Lat: 44.382	Long: 64.457	35.605 KM	19.23 NM
BRIDGEWATER(SOUTH SHORE REGIONAL HOSPITAL) (CDT6 HELIPORT Cert)	Lat: 44.382	Long: 64.51	31.939 KM	17.25 NM

# Canadian Aviation Regulations

## Division III — General Operating and Flight Rules

For full listing please visit <https://laws-lois.justice.gc.ca/eng/regulations/SOR-96-433/FullText.html#s-901.27>

### Visual Line-of-sight

- **901.11 (1)** Subject to subsection (2) no pilot shall operate a remotely piloted aircraft system unless the pilot or a visual observer has the aircraft in visual line-of-sight at all times during flight.
- **(2)** A pilot may operate a remotely piloted aircraft system without the pilot or a visual observer having the aircraft in visual line-of-sight if the operation is conducted in accordance with a special flight operations certificate — RPAS issued under section 903.03.

### Procedures

- **901.23 (1)** No pilot shall operate a remotely piloted aircraft system unless the following procedures are established:
  - **(a)** normal operating procedures, including pre-flight, take-off, launch, approach, landing and recovery procedures; and
  - **(b)** emergency procedures, including with respect to
    - **(i)** a control station failure,
    - **(ii)** an equipment failure,
    - **(iii)** a failure of the remotely piloted aircraft,
    - **(iv)** a loss of the command and control link,
    - **(v)** a fly-away, and
    - **(vi)** flight termination.
- **(2)** If the manufacturer of the remotely piloted aircraft system provides instructions with respect to the topics referred to in paragraphs (1)(a) and (b), the procedures established under subsection (1) shall reflect those instructions.
- **(3)** No pilot shall conduct the take-off or launch of a remotely piloted aircraft unless the procedures referred to in subsection (1) are reviewed before the flight by, and are immediately available to, each crew member.
- **(4)** No pilot shall operate a remotely piloted aircraft system unless the operation is conducted in accordance with the procedures referred to in subsection (1).

### Site Survey

**901.27** No pilot shall operate a remotely piloted aircraft system unless, before commencing operations, they determine that the site for take-off, launch, landing or recovery is suitable for the proposed operation by conducting a site survey that takes into account the following factors:

- **(a)** the boundaries of the area of operation;
- **(b)** the type of airspace and the applicable regulatory requirements;
- **(c)** the altitudes and routes to be used on the approach to and departure from the area of operation;
- **(d)** the proximity of manned aircraft operations;
- **(e)** the proximity of aerodromes, airports and heliports;
- **(f)** the location and height of obstacles, including wires, masts, buildings, cell phone towers and wind turbines;
- **(g)** the predominant weather and environmental conditions for the area of operation; and
- **(h)** the horizontal distances from persons not involved in the operation.

### Operations at or in the Vicinity of an Aerodrome, Airport or Heliport

- **901.47 (1)** No pilot shall operate a remotely piloted aircraft at or near an aerodrome that is listed in the *Canada Flight Supplement* or the *Water Aerodrome Supplement* in a manner that could interfere with an aircraft operating in the established traffic pattern.
- **(2)** Subject to section 901.73 no pilot shall operate a remotely piloted aircraft at a distance of less than
  - **(a)** three nautical miles from the centre of an airport; and
  - **(b)** one nautical mile from the centre of a heliport.
- **(3)** No pilot shall operate a remotely piloted aircraft at a distance of less than three nautical miles from the centre of an aerodrome operated under the authority of the Minister of National Defence unless the operation is conducted in accordance with a special flight operations certificate — RPAS issued under section 903.03.

### Records

- **901.48 (1)** Every owner of a remotely piloted aircraft system shall keep the following records:
  - **(a)** a record containing the names of the pilots and other crew members who are involved in each flight and, in respect of the system, the time of each flight or series of flights and
  - **(b)** a record containing the particulars of any mandatory action and any other maintenance action, modification or repair performed on the system, including
    - **(i)** the names of the persons who performed them,
    - **(ii)** the dates they were undertaken,
    - **(iii)** in the case of a modification, the manufacturer, model and a description of the part or equipment installed to modify the system, and
    - **(iv)** if applicable any instructions provided to complete the work.
- **(2)** Every owner of a remotely piloted aircraft system shall ensure that the records referred to in subsection (1) are made available to the Minister on request and are retained for a period of
  - **(a)** in the case of the records referred to in paragraph (1)(a), 12 months after the day on which they are created; and
  - **(b)** in the case of the records referred to in paragraph (1)(b), 24 months after the day on which they are created.
- **(3)** Every owner of a remotely piloted aircraft system who transfers ownership of the system to another person shall, at the time of transfer, also deliver to that person all of the records referred to in paragraph (1)(b).

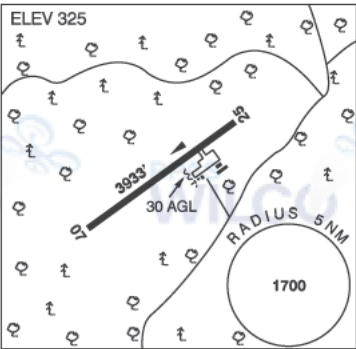
NOVA SCOTIA

AERODROME/FACILITY DIRECTORY

LIVERPOOL / SOUTH SHORE REGIONAL NS

CYAU

REF	N44 13 50 W64 51 22 14NNW 18°W (2013) UTC-4(3) Elev 325' A5003
OPR	South Shore Flying Club 902-685-3242 Reg
PF	D-2,3,4,5,6
FLT PLN	London 866-WXBRIEF (Toll free within Canada) or 866-541-4104 (Toll free within Canada & USA) (IFR only) Moncton 506-867-7177 or 866-480-8200.
FIC	
ACC	
RWY DATA	Rwy 07(071°)/25(251°) 3933x75 ASPH
RCR	Opr No win maint
COMM	tfc 122.8 5NM 3300 ASL Moncton Ctr 123.9 Moncton Ctr 123.9
ATF	
ARR	
DEP	
CAUTION	P-line aprx 30' high on SW side of apron running NW/SE. Training area around A/D up to 3000 ASL, see VTPC.

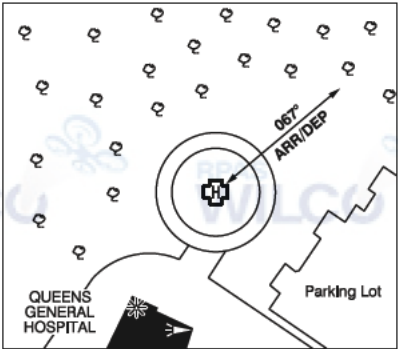
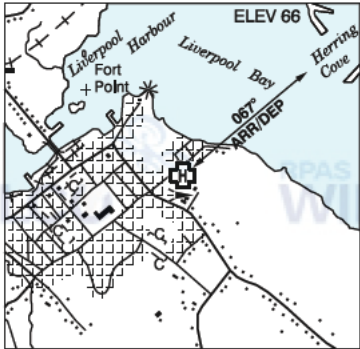


NOVA SCOTIA

AERODROME/FACILITY DIRECTORY

LIVERPOOL (QUEENS GENERAL HOSP) NS (Heli)

CLQ2



REF	N44 02 19 W64 42 19 Adj 17°W (2014) UTC-4(3) Elev 66' A5003
OPR	Queens General Hosp 902-354-3436 Cert PPR
FLT PLN	
FIC	London 866-WXBRIEF (Toll free within Canada) or 866-541-4104 (Toll free within Canada & USA)
ACC	(IFR only) Moncton 506-867-7177 or 866-480-8200.
HELI DATA	FATO/TLOF 79' dia ASPH Safety Area 105' dia Max heli overall length 52.5'
LIGHTING	FH
COMM	
ATF	tfc 123.2 5NM 3000 ASL
PRO	Arr/dep 067° fr heli, slope 12% (H2).
CAUTION	Numerous lamp posts (aprx 21 AGL) in adj pkg lot. Lgtd and marked floodlight lamp post W of pad. Trees in vic of heli. See sketch.



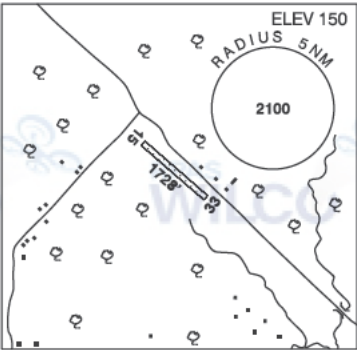
NOVA SCOTIA

AERODROME / FACILITY DIRECTORY

BRIDGEWATER / DAYSPRING AIRPARK NS

CDY6

REF	N44 22 55 W64 27 27 1N 17°W (2015) UTC-4(3) Elev 150' VTA A5003
OPR	K Bennett 902-530-2338 or 902-521-1441 Reg PN
FLT PLN	
FIC	London 866-WXBRIEF (Toll free within Canada) or 866-541-4104 (Toll free within Canada & USA)
ACC	(IFR only) Moncton 506-867-7177 or 866-480-8200.
RWY DATA	Rwy 15/33 1728x30 gravel/asphalt mix
RCR	Opr Ltd win maint
COMM	
ATF	tfc 123.2 5NM 3200 ASL
CAUTION	Abrupt drop-off thld Rwy 33. High trees and powerline on apch to Rwy 15. Bridgewater (South Shore Regional hosp) heli 2.3NM W of A/D

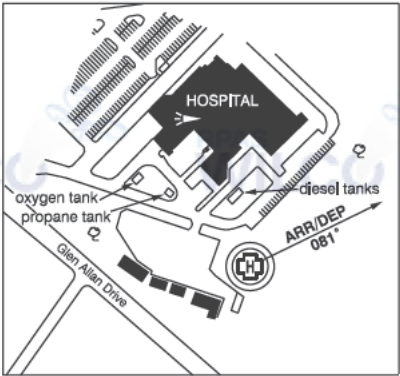
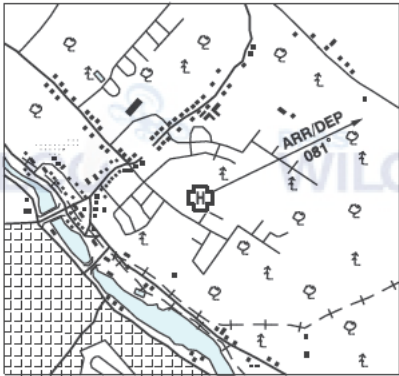
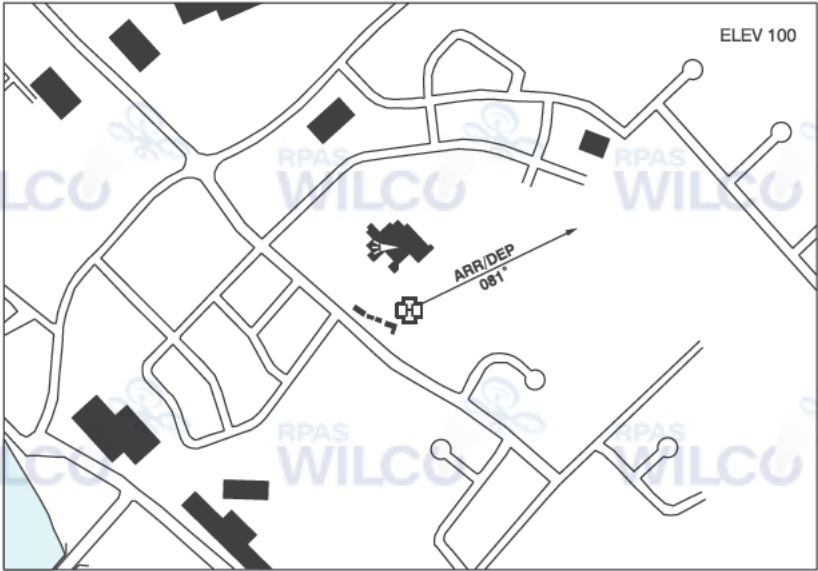


NOVA SCOTIA

AERODROME/FACILITY DIRECTORY

BRIDGEWATER (SOUTH SHORE REGIONAL HOSP) NS (Heli)

CDT6



REF	N44 22 56 W64 30 38 Adj N 17°W (2016) UTC-4(3) Elev 100' A5003
OPR	Nova Scotia Health Authority 902-543-4603 Cert PPR
PF	B-1,2,4 C-3,5,6,7,8
FLT PLN	
FIC	London 866-WXBRIEF (Toll free within Canada) or 866-541-4104 (Toll free within Canada & USA)
ACC	(IFR only) Moncton 506-867-7177 or 866-480-8200.
HELI DATA	FATO/TLOF 86' dia ASPH Safety Area 115' dia Max heli overall length 57.4'
RCR	Opr
LIGHTING	RW(LO) LED no aiming pt DR
COMM	
ATF	tfc 123.2 5NM 3100 ASL



NOVA SCOTIA

AERODROME/FACILITY DIRECTORY

BRIDGEWATER (SOUTH SHORE REGIONAL HOSP) NS (Heli) (Cont'd) CDT6

PRO	Arr/dep 081° fr heli, slope 12% (H2), day/night use.
CAUTION	Training area around heliport up to 3000 ASL, see Liverpool VTPC-Training area. Lgtd and marked light poles W of heli. Lgtd stacks on hosp roof NNW of heli.